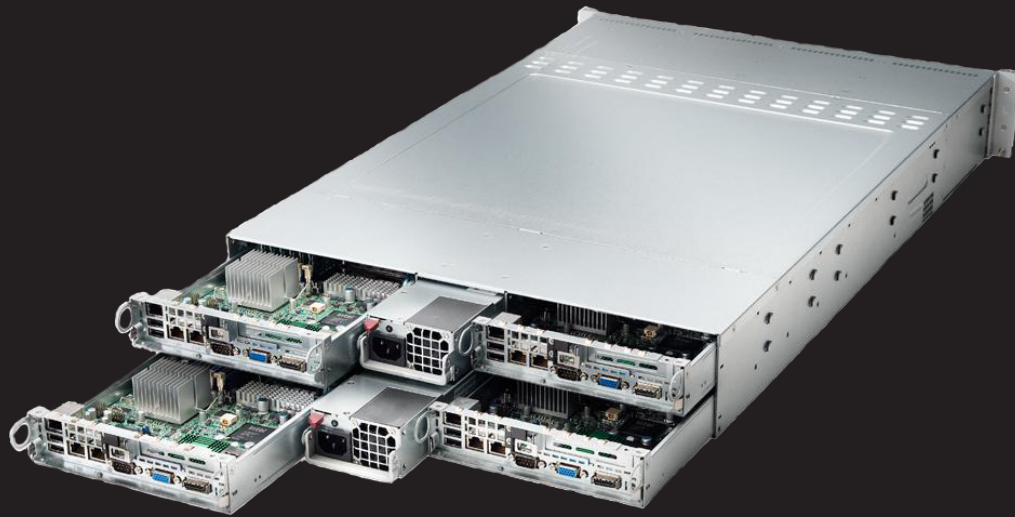




**Complete Platform**  
for today's Telco/ISP: **vSWITCH**



...now you can't say you do not know  
what's the best platform available...

**vSWITCH**

*... Advanced Simplicity*

vSWITCH

High Performance

Switching Platform



### SWITCHING Nodes ①

- 4 Hot Swappable, Full Featured SWITCHING Nodes In a 2U Chassis

### 480 Calls Per Node ②

- Up to 8 T1/PRIs or 480 SIP concurrent calls per module

### Redundant Power Supplies ③

- Shared, Redundant 1400W Power Supply

### Ethernet Interfaces ④

- Redundant Gigabit Ethernet Connections

### Remote Management ⑤

- Secure remote KVM-CLI and POWER management per SWITCHING Nodes

### PSTN Interfaces ⑥

- Compatible with 8 T1/E1 PRI PSTN PCI-e Cards

### Storage Nodes ⑦

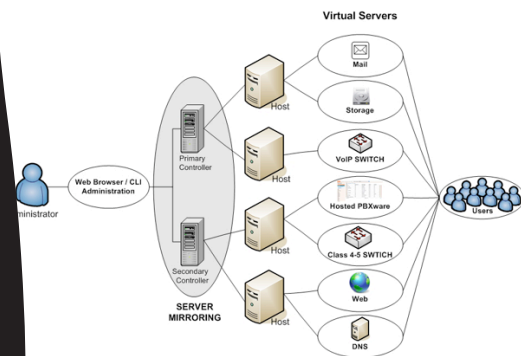
- 3 Hot-Swap Hard Disks in a RAID 5



vSWITCH is ready for installation of the following Bicom Systems products:

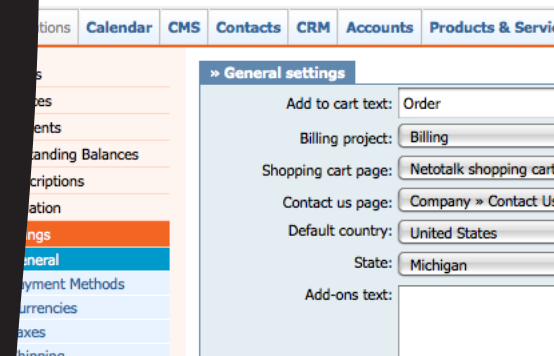
## SERVERware

- High Availability Features
- Next generation communication technology solution
- Delivers a wide range of IP services and applications
- Redundant, highly available and fault tolerant
- Command line and Web Interface management



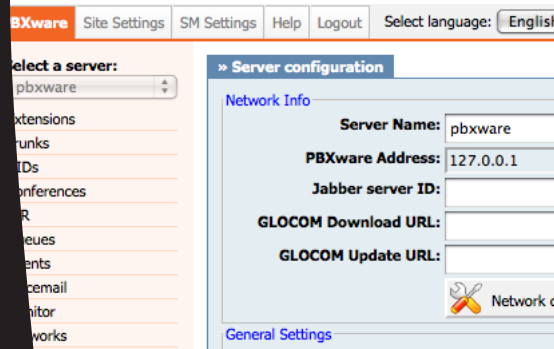
## TELCOware

- CMS (Content Management System)
- CRM (Customer Relations Management)
- Accounts
- Advanced Billing and Shopping Cart
- Easy to setup Online customer portal



## PBXware

- Professional Turnkey Telephony Platform
- Easy To Setup And Use With Included GUI
- Flexible, Reliable and Scalable
- Standard System Features and more
- Call Routing Support (LCR)
- Comprehensive User Features
- Highest system availability possible



### CPU

- 2x Intel Xeon E5504 Quad-Core 2.00GHz, 4MB Cache, 4.8GT/s QPI

### Memory

- 6GB (6 x 1GB) Operating at 1333MHz Max (DDR3-1333 ECC Unbuffered DIMMs)

### InfiniBand (optional)

- Infinihost III InfiniBand with CX4 connector
- OR ConnectX DDR InfiniBand with QSFP connector
- OR ConnectX QDR InfiniBand with QSFP connector

### Graphics

- Matrox G200eW

### IPMI

- Support for Intelligent Platform Management Interface v.2.0
- IPMI 2.0 with virtual media over LAN and KVM-over-LAN support
- Winbond® WPCM450 BMC

### Network Controllers

- Intel® 82576 Gigabit Ethernet Controller
- Supports 10BASE-T, 100BASE-TX, and 1000BASE-T, RJ45 output
- Intel® I/OAT 3 support
- VMDq support
- 1 Realtek RTL8201N PHY (dedicated IPMI)

### Serial ATA

- Six Serial ATA ports
- Six SATA hard drives supported

### LAN

- 2 RJ45 LAN ports
- 1 RJ45 Dedicated IPMI LAN port

### Serial ATA

- Six Serial ATA ports
- Six SATA hard drives supported

### LAN

- 2 RJ45 LAN ports
- 1 RJ45 Dedicated IPMI LAN port

### USB

- 2 rear + 1 header (2 ports)
- Total 4 USB 2.0 Compliant

### VGA

- 1 VGA Port

### External Drive

- Slim External DVD Writer USB w/ AC Power

### PCIe

- 1 x PCIe 2.0 x16

### Rail Kit

- Quick-Release Rail Kit for Square Holes,  
19 - 26.6 inches

### Chassis

- Form Factor  
2U rackmount chassis
- Height  
88 mm, 3.47"
- Width  
438 mm, 17.25"
- Depth  
724 mm, 28.5"
- Weight  
43 lbs / 68 lbs pkg weight

### Environment

#### Ambient Temperature

- Operating: 10°C to 35°C; non-operating: -40°C to 70°C

#### Relative Humidity

- Operating: 8 – 90% non-condensing;  
Non-operating: 5 – 95% non-condensing

#### Power Supply

- Redundant 1400W high-efficiency power supply with PMBus
- 80 PLUS Gold Certified

#### AC Input

- 1100W: 100 – 140V, 50 – 60Hz, 9.5 – 13.5 Amp
- 1400W: 180 – 240V, 50 – 60Hz, 7.0 – 9.5 Amp

#### DC Output +5V standby

- 4 Amp

#### DC Output +12V

- 92 Amp @ 100-140V
- 116 Amp @ 180-240V

#### Power Supply Safety / EMC

- USA – UL listed, FCC
- Canada – CUL listed
- CCC Certification
- EN 60950 / IEC 60950-Compliant Europe / CE Mark
- Germany – TUV Certified



## Vision Statement

We Unify Communications

## Mission Statement

We provide the Communication World with the most Complete Turnkey Communication Systems available by Creating, Unifying and Supporting the Most Advanced of Current Technologies.

## Overview

Bicom Systems was the first company to deliver Open Source Communications Software as Professional Turnkey Solutions.

By combining the best of open source telephony and its own proprietary software, Bicom Systems can provide enterprises with turnkey solutions that take account of the clients' exact needs within a very cost-effective framework - giving CIOs the safest choice. This mix includes royalty-free software, vibrant open source communities, available custom development backed up by accountable, professional support services.

The company finds innovative open source communication projects and professionalizes the project by creating, unifying and supporting turnkey systems with its proprietary in-house software. Bicom Systems provides the resources, core development and support services to enable popular open source projects to scale into enterprise-class communications software.

### **Bicom Systems (USA)**

3801 S OCEAN DR Suite 12E  
Hollywood  
Florida  
33019-2980  
United States

Tel: +1-954-278-8470  
Fax: +1-954-278-8471

E-mail: [sales@bicomsystems.com](mailto:sales@bicomsystems.com)

### **Bicom Systems (France)**

68 rue Principale  
Moulin-le-Comte  
Aire-sur-la-Lys  
62120  
France

Tel: +33 3 61 08 01 32  
Tel: +44 20 33 99 88 99

E-mail: [sales@bicomsystems.com](mailto:sales@bicomsystems.com)

### **Bicom Systems (UK)**

Unit 5 Rockware Business Center  
5 Rockware Avenue  
Greenford, London  
UB6 0AA  
United Kingdom

Tel: +44 20 3399 8800  
Tel: +44 20 3399 8899  
Fax: +44 20 3399 8801

E-mail: [sales@bicomsystems.com](mailto:sales@bicomsystems.com)

### **DISTRIBUTOR**